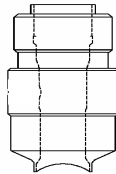
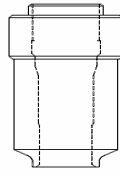


Tipo: Sin Tee

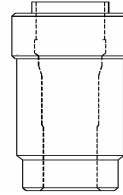
Niples de Conjuntos de Acceso HP™



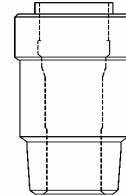
Modelo HP1000
Flareweld



Modelo HP2000
Butt weld

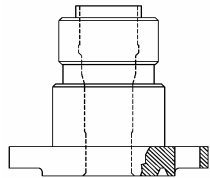


Modelo HP3000
Socket weld

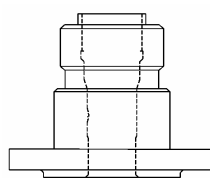


Modelo HP4000
NPT

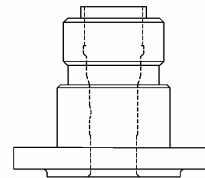
MODELO	ALTURA (PULG)	PESO (LBS)
HP1000 Flareweld	5,25	5,5
HP2000 Butt weld	5,25	4,5
HP3000 Socket weld	6,25	4,5
HP4000 NPT	6,25	4,5



Modelo HP5000
Brida ANSI RJ



Modelo HP6000
Brida ANSI RF



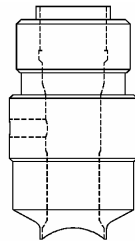
Modelo HP7000
Brida API

TAMAÑO DE LA BRIDA	ALTURA (PULG)	PESO (LBS)
150#	5,25	10,50
300#	5,25	11,50
4/600#	6,25	15,25
9/1500#	6,25	30,75
2500#	6,25	40,00

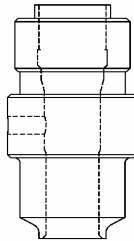
Rango de Temperatura: -20°F (28,9°C) a +350°F (176,6°C)

Rango de Presión: 6000 PSI o como el tamaño del flange.

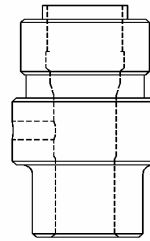
Tipo: Con Tee



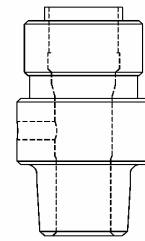
Modelo HP1100
Flareweld



Modelo HP2100
Buttweld

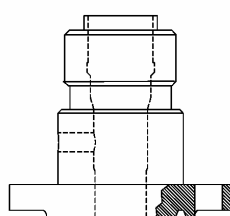


Modelo HP3100
Socketweld

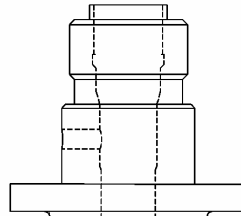


Modelo HP4100
NPT

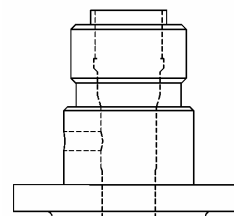
1/4" T		1/2" T		3/4" T		1" T	
Altura (Pulg)	Peso (lbs)	Altura (Pulg)	Peso (lbs)	Altura (Pulg)	Peso (lbs)	Altura (Pulg)	Peso (lbs)
5,25	4,5	6,25	4,75	6,25	6,5	7,25	7



Modelo HP5100
Brida ANSI RJ



Modelo HP6100
Brida ANSI RF



Modelo HP6100
Brida API

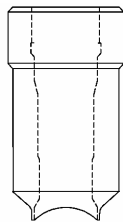
MODELO	TAMAÑO DEL FLANGE	1/4" T		1/2" T		3/4" T		1" T	
		ALTURA (PULG)	PESO (LBS)	ALTURA (PULG)	PESO (LBS)	ALTURA (PULG)	PESO (LBS)	ALTURA (PULG)	PESO (LBS)
HP5100 ANSI Flange RJ	150#	5,25	9,50	7,25	10,00	7,25	10,00	7,25	10,50
	300#	5,25	11,50	7,25	11,75	7,25	12,00	7,25	12,00
	4/600#	6,25	12,75	7,25	13,00	7,25	13,00	7,25	13,00
	9/1500#	6,25	25,75	8,25	26,00	8,25	26,25	8,25	26,50
	2500#	6,25	40,20	8,25	40,50	8,25	40,40	8,25	40,75
HP6100 ANSI Flange RF	150#	5,25	9,75	7,25	10,00	7,25	13,00	7,25	13,00
	300#	5,25	11,50	7,25	11,75	7,25	17,00	7,25	17,00
	4/600#	6,25	12,75	7,25	13,00	7,25	18,00	7,25	18,00
	9/1500#	6,25	25,75	8,25	26,00	8,25	38,00	8,25	38,00
HP7100 API Flange	2000#	6,25	15,75	7,25	18,00	7,25	18,00	7,25	18,00
	3/5000#	6,25	31,00	8,25	38,00	8,25	38,00	8,25	38,00
	10000#	6,25	40,50	8,25	45,50	8,25	45,50	8,25	45,50

Rango de Temperatura: -20°F (28,9°C) a +350°F (176,6°C)
Rango de Presión: 6000 PSI o más según el tamaño de la brida.

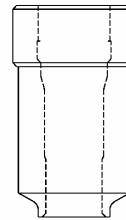


Tipo: Sin Tee

Niples de Conjuntos de Acceso MH™

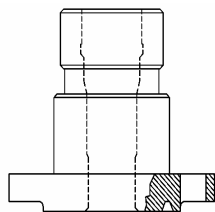


Modelo MH1000
Flareweld

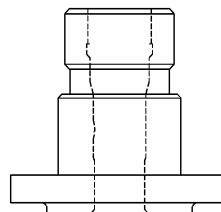


Modelo MH2000
Butt weld

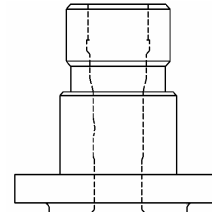
MODELO	ALTURA (PULG)	PESO (LBS)
HP1000 Flareweld	5,5	7
HP2000 Butt weld	5,5	7



Modelo MH5000
Brida ANSI RJ



Modelo MH6000
Brida ANSI RF

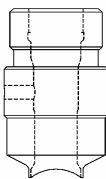


Modelo MH7000
Brida API

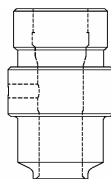
TAMAÑO DEL FLANGE	ALTURA (PULG)	PESO (LBS)
150#	5,5	11
300#	5,5	13
4/600#	5,5	14
9/1500#	5,5	27
2500#	6,5	42

Rango de Temperatura: -20°F (28,9°C) a +350°F (176,6°C)
Rango de Presión: 6000 PSI o según el tamaño de la brida.

Tipo: Con Tee

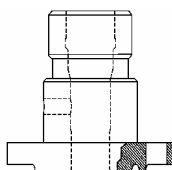


Modelo MH1100
Flareweld

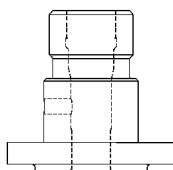


Modelo MH2100
Butt weld

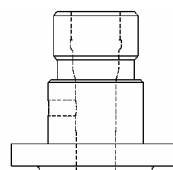
MODELOS	1/4" T		1/2" T		3/4" T		1" T	
	ALT (IN)	PESO (LBS)	ALT (IN)	PESO (LBS)	ALT (IN)	PESO (LBS)	ALT (IN)	PESO (LBS)
MH1100 (Flareweld)	7,50	11	7,50	11	7,50	11	7,50	11
MH2100 (Buttweld)	7,19	11	7,19	11	7,19	11	7,19	11



Modelo
MH5100
ANSI Brida RJ



Modelo
MH6100
ANSI Brida RF



Modelo
MH7100
API Brida

MODELO	TAMAÑO DEL FLANGE	1/4" T		1/2" T		3/4" T		1" T	
		ALTURA (PULG)	PESO (LBS)	ALTURA (PULG)	PESO (LBS)	ALTURA (PULG)	PESO (LBS)	ALTURA (PULG)	PESO (LBS)
HP5100 ANSI Flange RJ	150#	7,5	15	7,5	15	7,5	15	7,5	15
	300#	7,5	17	7,5	17	7,5	17	7,5	17
	4/600#	7,5	18	7,5	18	7,5	18	7,5	18
	9/1500#	7,5	31	7,5	31	7,5	31	7,5	31
	2500#	7,5	46	7,5	46	7,5	46	7,5	46
HP6100 ANSI Flange RF	150#	7,5	15	7,5	15	7,5	15	7,5	15
	300#	7,5	17	7,5	17	7,5	17	7,5	17
	4/600#	7,5	18	7,5	18	7,5	18	7,5	18
	9/1500#	7,5	31	7,5	31	7,5	31	7,5	31
	2500#	7,5	46	7,5	46	7,5	46	7,5	46
HP7100 API Flange	2000#	7,5	18	7,5	18	7,5	18	7,5	18
	3/5000#	7,5	31	7,5	31	7,5	31	7,5	31
	10000#	8,5	46	8,5	46	8,5	46	8,5	46

Rango de Temperatura: -20°F (28,9°C) a +350°F (176,6°C)

Rango de Presión: 6000 PSI o como el tamaño de la brida.